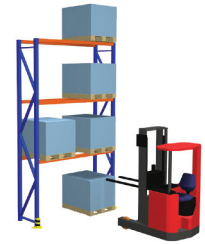


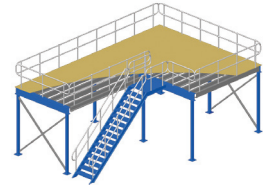
DMD

STORAGE SOLUTIONS

Creating Safe & Efficient Work Environments



RACKING SYSTEMS



PLATFORM SYSTEMS



SHELVING



PLASTIC STORAGE



BENCHES & CABINETS



Established in 1995, DMD Storage Solutions have a wealth of local and international knowledge and experience to solve your storage issues. DMD Storage Solutions offer a range of products & services that enable us to confidently cover all your storage requirements.

DMD's purpose built facility in Bibra Lake, Perth has allowed us to develop our extensive product range and grow our services in a better equipped environment. Our 250m² showroom, which is open for you to visit, displays our unique product range of solutions.

Storage Solutions is our speciality

We work with you to provide a tailored storage solution that takes into consideration improving your productivity, workflow, space optimization and safety.

Our systems utilise cutting edge analysis software to meet Australian Standards including the latest AS4084-2012 when engineering your storage structure.

Our racking systems are engineered with a high steel content, which minimises operational damage and reduces ongoing maintenance costs.

Work with a company you can trust

At DMD Storage Solutions we pride ourselves on long-term relationships we have built with our clients. We actively aim to build close relationships in order to ensure there is a clear understanding of your operational needs.

Committed to being your number one choice

Our clients rely on our expertise to provide the appropriate storage solution and address the efficient movement of your goods and workflow.

This is what we do best at DMD Storage Solutions.

Our People

Our people have worked on projects around the world. This enables DMD to utilise our diverse local and international experience and introduce innovative solutions to Australia.

Our people are passionate about their roles at DMD and work together as a team to ensure a personal experience for you.

DMD employ specialists within the field to ensure you receive a personalised service throughout your project.

Our Commitment to You

DMD Storage Solutions take pride in spending time with you to make appropriate use of our technology and products to solve your storage problems. Our technology and products ensure reduced total cost of ownership for our clients.

DMD Storage Solutions can show you how much more efficient your operations can be by optimising space, ensuring your operations are efficient, improving stock control and safety is of the highest standard.



*Mark Antonio
& Danny Wright,
Managing Directors*



DMD Storage Solutions creates tailor made solutions to increase the efficient movement of goods and workflow.



DMD Supply Direct provides an extensive range of stocked storage and handling accessories. Purchase online or through a dedicated account manager.



DMD Rental offers a simple monthly payment option for customers who require solutions without a capital outlay.



DMD Used Equipment recycles pre-owned equipment and reduces our carbon footprint as well as offering products for the price conscious.



Automated Storage Australia's dedicated company has its own devoted team of experts to offer the best in automated storage solutions for you.

Contents

RACKING SYSTEMS

Selective Pallet Racking	4
Double Deep	9
Drive-In Pallet Racking	10
Carton Live Storage	11
Cantilever Racks	12
Racking Safety	13
Visipro	14
Racking Protection	15
Racking Accessories	16

PLATFORM SYSTEMS

Mezzanine Platforms	18
---------------------	----

SHELVING SYSTEMS

DMD Longspan Shelving	20
Econo-Span Shelving	22
Econo-Cool Shelving	23
DMD Steel Shelving (RUT)	24
Gondola Shelving	26

PLASTIC STORAGE

Parts Trays	28
Pick Bins	29
Rhino Bins	30
Louvre Panels	31
Betta Collapsible Crates	32
Betta Crates	33
Betta Security Crates	33
Stack & Nest Crates	34
Enviro Crates	35

BENCHES & CABINETS

Standard Lockers	36
Heavy Duty Lockers	37
Ultimate Industrial Workstation	38
Ultimate Industrial Benches	39
Ultimate Drawer Cabinets	40
Ultimate Cupboards	41
Storage Cabinets	42
Compact Mobile Filing Systems	43
Safety Storage Cabinets	44

OUR APPROACH

	46
--	----

SELECTIVE PALLET RACKING



ADVANTAGES

- > 100% accessibility with good stock rotation
- > Unrestricted access to all pallets to full height of warehouse
- > Compatible with most forklift trucks
- > Easy beam adjustment accommodates variable pallet heights
- > Can be configured to suit any load type
- > Lower level pallets can be hand-picked
- > Economical shelving beams can be added for hand picking



Are You Looking For An Easily Accessible Storage Solution?

DMD's Selective Pallet Racking the ultimate solution for any warehouse that holds a wide range of stock on pallets. Stock rotation is easy with maximum accessibility and direct access to all pallets.

Using Selective Pallet Racking, pallets can be located, accessed and moved individually enabling rapid handling of palletised goods. Easy beam adjustment for variable pallet height means stock of all sizes can be accommodated.

The system is readily adjustable and offers a huge range of options and components to accommodate specialised load types. Best of all, it allows access to every pallet in the warehouse. You can pick items from pallets stored directly on the ground or additional shelving beams can be added for lower level picking.

OUR SERVICES INCLUDE:

- > Consultancy
- > Installation
- > Relocation & Reconfiguration
- > Maintenance & Repair
- > Rack Audits

Latest Australian Standards

All pallet racking structures are carefully calculated to meet the latest Australian Standard 4084-2012. Using our state-of-the-art analysis software every application is independently analysed to meet your specific requirements.



DESIGN & SAFETY STANDARDS

DMD ensures that all equipment has been designed in Australia to meet or exceed the following Australian Standards:



- AS 4084-2012 Steel Storage Racking
- EN 15512:2009 European Steel Static Storage Systems
- AS/NZS 4600:2005 Cold Formed Steel Structures
- AS 4100-1998 Steel Structures

BOXED PALLET BEAMS

Strong, Sturdy and Well Engineered

Pallet Beams

The stronger box beam design results in fewer maintenance issues as the structure ages.

By using our stronger boxed beam design, maintenance costs are reduced by minimising forklift impact damage when loading and unloading products. This results in a stronger, safer system with a lower total cost of ownership.

Pallet Beams are fully welded to the connectors at the front, back, top and bottom

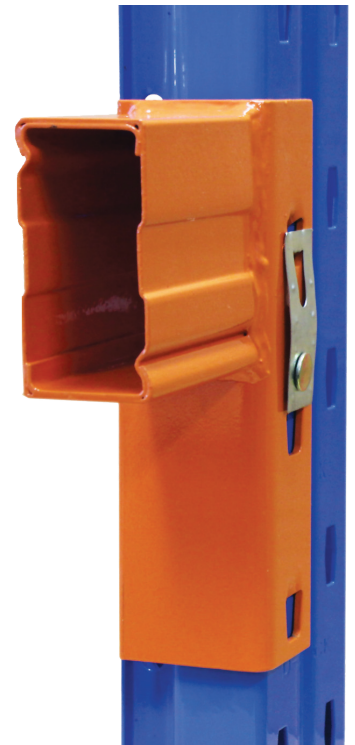
Cheaper systems may only partially weld the

beam which can threaten future strength. This can endanger the safety of your staff and the system as a whole.

Pallet Beams are made with a Double Interlocking C-Section

This innovative technique makes the structure more resistant to general wear and tear from forklift impact. All beams are made from high tensile steel.

Save money and invest in a Box Pallet Beam System



BEAM LENGTH (mm)	2,591	2,743	2,591	2,743	3,048	3,353	3,810
BEAM SECTION (mm)	100 x 50	100 x 50	120 x 50	120 x 50	120 x 50	120 x 50	140 x 50
CAPACITY PER PAIR (Kg)	2,490	2,370	3,215	3,057	2,787	2,561	3,022

Open Channel Beams

Open channel beams can be used for heavier duty shelving or light duty pallet applications. The safety return flange eliminates sharp edges and provides a safer working environment. Optional decking support bars allow heavier loading and hold the boards in position without having to use screws. Not having to use screws makes this easily adjustable, if and when required.



BEAM LENGTH (mm)	1,372	1,524	2,591	2,743
BEAM SECTION (mm)	77 x 50	77 x 50	77 x 50	77 x 50
CAPACITY PER PAIR (Kg)	2,132	1,948	980	897

Step Beams

For medium duty shelving applications, the 60mm step beam with 18mm recess is very popular and can be fitted with board, steel shelf panels or wire decks. The step recess reduces space wastage between shelf levels as the decking sits inside the beam profile.



BEAM LENGTH (mm)	1829	2591	2743
BEAM SECTION (mm)	60 x 50	60 x 50	60 x 50
CAPACITY PER PAIR (Kg)	901	567	515

All beam types can be made to custom sizes, please contact us for more information

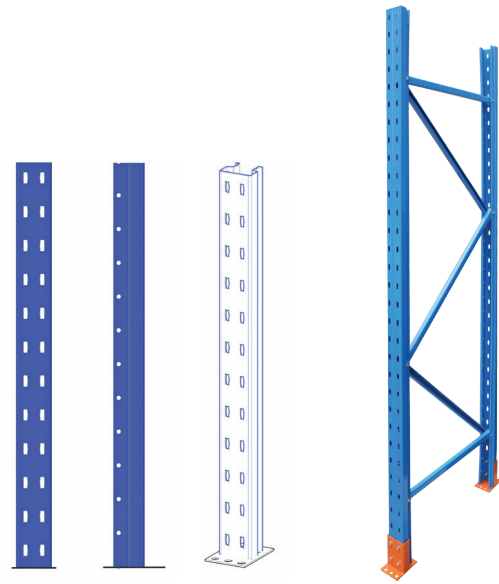
FRAMES

Selective pallet racking system is comprised of eight upright thickness grades (J,K,L,M,N,Q,R & W) combined with a nominal face width of 90mm, 113mm and 135mm.

These combinations mean DMD can offer a solution for all of your storage requirements.

Safety is Paramount

All pallet racking structures are carefully calculated to meet the latest Australian Standard 4084-2012. Using our state-of-the-art analysis software every application is independently analysed to meet your specific requirements.



FRAME HEIGHTS (mm)	914	2,133	2,438	3,048	3,658	4,267	4,877	5,486	6,096	7,315
FRAME DEPTHS (mm)	450	600	838	1,219						

CUSTOM FRAME SIZES CAN BE MADE TO ORDER, PLEASE CONTACT US FOR MORE INFORMATION

Base Plates

Base plates are designed to spread the frame axial loads into the floor slab and resist any uplift due to horizontal forces. There are three types of base plates depending on individual design requirements.

Note: All base plates are fixed to the floor slab with two expanding type masonry anchors of suitable design.



Type A Standard Base Plate

- > Manufactured from 4mm electroplated mild steel
- > Frame loads up to 9,000Kg
- > Dimensions: H48 x W100 x D140mm



Levelling Shims

- > Manufactured from electroplated mild steel
- > Available in 1.5mm and 6.0mm thick
- > Same size as base plate
- > Maximum packing height of 38mm



Type B Heavy Duty Reversible Base Plate

- > Manufactured from 6mm powder coated mild steel with a thick channel up stand for fixing to the upright flanges
- > Suitable for frame loads up to 15,000Kg
- > Dimensions: H106 x W100 x D140mm



Type C Heavy Duty Base Plate

- > Manufactured from 6mm thick powder coated mild steel with a 4mm thick channel bracket for fixing to the upright
- > Frame loads up to 15,000Kg
- > Dimensions: H145 x W100 x D140mm

PALLET RACKING COMPARISONS

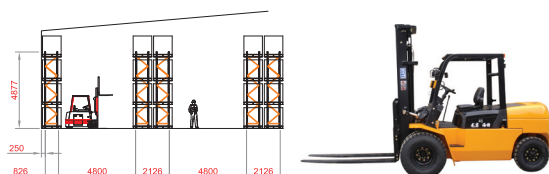
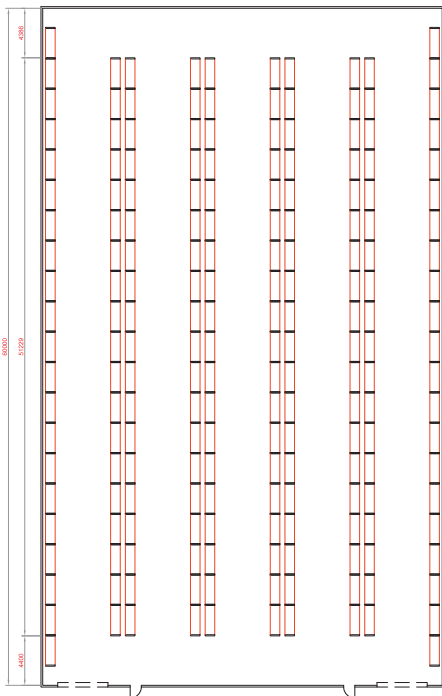
The two most frequently used pieces of lifting equipment in warehouses are counterbalance forklifts or reach trucks.

The traditional counterbalance forklift operates well on most surfaces and can also be used to load and unload trucks and sea containers. When loading and unloading pallet racking, counterbalance forklifts generally lift from 3 to 6 metres high and operate in an aisle of 4 to 5 metres wide.

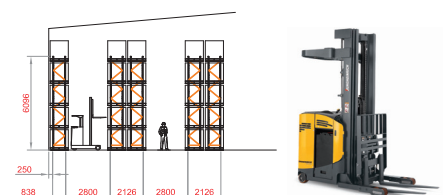
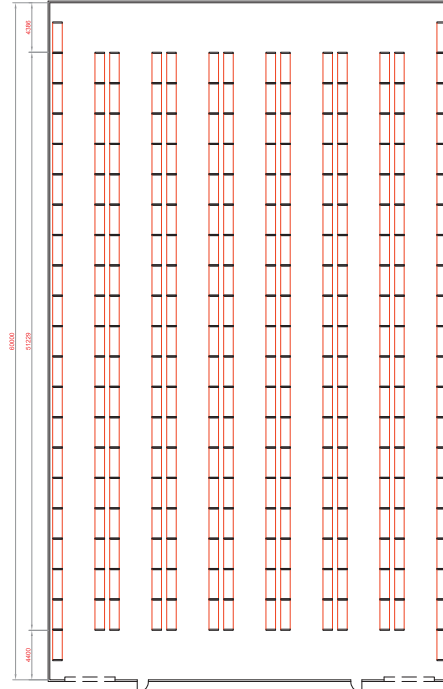
Reach trucks are a more space efficient piece of lifting equipment. Reach trucks lift from 6 to 10 metres high and are designed for small aisles from 2.7 to 3.5 metres wide. This higher lifting capacity and smaller aisle width provides increased storage, improved productivity with faster travel speeds and precise load handling.

COMPARISONS	COUNTER BALANCE	REACH	DOUBLE DEEP
BUILDING AREA	2,100 m ²	2,100 m ²	2,100 m ²
LIFTING HEIGHT	6,000 mm	8,500 mm	8,500 mm
AISLE WIDTH REQUIRED	4,800 mm	2,800mm	2,800 mm
FLOOR SPACE UTILISED	25%	35%	50%
NUMBER OF BAYS	194	270	346
NUMBER OF PALLETS HIGH	4	5	5
TOTAL PALLET LOCATIONS	1,552	2,700	3,460

COUNTERBALANCE FORKLIFT



REACH TRUCK



DOUBLE DEEP

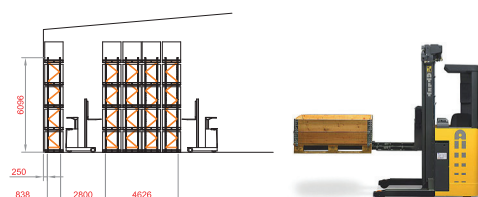
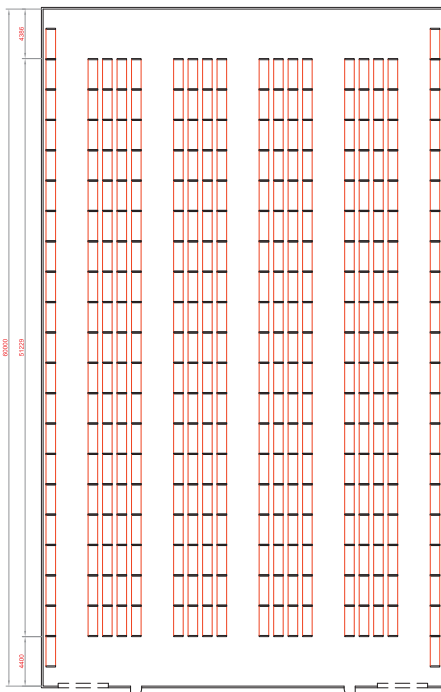
Do You Distribute High Volumes of the Same Product?

Double Deep Racking offers a cost effective compromise between selective and non-selective pallet racking systems. Pallets are stored two-deep resulting in greater storage density and half the number of aisles required.

Immediate access to 50% of stock allows reasonable stock rotation on a first in last out basis and makes efficient use of all available space.

All Double Deep Racking is made with a high strength design, reducing damage from accidental impact.

DOUBLE DEEP REACH TRUCK



Double Deep Racking is best suited for -

- > High turnover stock
- > First In Last Out (FILO) storage
- > Where stock rotation is not as critical
- > Multiple pallets of the same SKU (Stock Keeping Units) are stored
- > Double deep pallet guide rails required on levels above 4000mm

DRIVE-IN PALLET RACKING



Drive-In Racking provides high density pallet storage that can be accessed using counterbalanced and reach forklifts.

Pallets are stored in lanes several pallets deep and several pallets high. Pallets above the ground level are supported and guided by a structural angle rail on both sides. This enables forklift operators to access their loads in a safe and efficient manner.

The Drive-In System has several improvements over traditional designs:

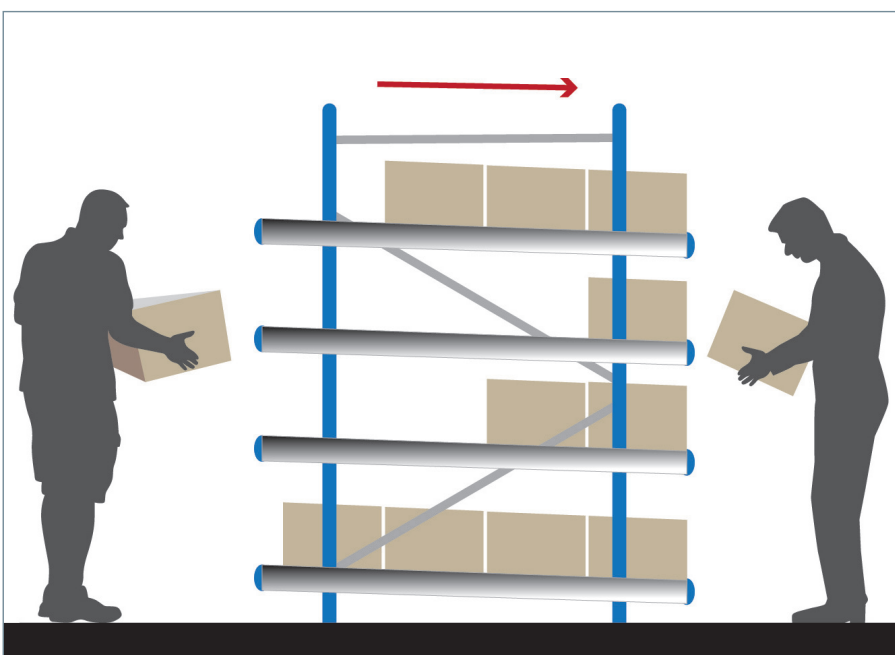
- > Drive-In racks have no spliced pallet rails
- > Pallet rails are heavy duty, 90 degree angle type with fast access lead-ins
- > Portal beams and rail beams are identical, making installation easier
- > Portal bracing and rail bracing sections are identical
- > Standard bay width to suit your pallet size
- > Our standard 90mm range of uprights suit most applications

Consider Drive-In Pallet Racking if:

- > You use a Counterbalance or Reach Forklift
- > Block stacking height is limited by the risk of product crushing
- > You store a low number of line items and selectivity is not important
- > First In Last Out (FILO) system is suitable when stock rotation is not a priority

If you need a unique, customised solution, call DMD Storage Solutions today to discuss your requirements.

CARTON LIVE STORAGE



Carton Live Storage is a great solution for fast moving products and provides quick and easy access to items.

Carton Live Storage (CLS) can be used in tough conditions such as cool rooms and help you save labour by providing faster picking. Using First In First Out (FIFO) picking means no outdated stock remains on the shelf which facilitates 100% stock rotation.

FEATURES

- > Small floor area required
- > Save on labour costs
- > Separate picking and restocking aisles
- > Full and split case picking can be made within the same bay
- > Better consolidation of picks

CANTILEVER RACKS



Cantilever racks can store any type of load but are particularly ideal for storing long, bulky or oddly-shaped items. Cantilever puts hard-to-store materials into an orderly storage system where they are more accessible.

Without front columns in the way, cantilever racks are fast to load and unload. They are the perfect solution for storing heavy long packs such as lengths of steel, timber and plaster boards. Our cantilever racks are designed to your specific requirements with a wide range of heights, arm lengths and upright spacing.

FEATURES

- > Available in heavy duty I-Beam bolted type or medium and light duty adjustable collar and pin type
- > Standard capacities from 100Kg to 1,000Kg per arm
- > Adjustable arms allow flexibility for a wide range of material types
- > Can be customised to suit any application
- > A full range of accessories, such as retaining pins or decking options, are available
- > Surface finishes are powder coated or hot dip galvanised for outdoor use
- > Available double or single sided

APPLICATIONS

Cantilever racking is recognised as the most efficient warehouse solution for the storage of:

- > Aluminium
- > Automotive industry products
- > Awnings, doors and frames
- > Bulky Items
- > Frames and trusses
- > Furniture
- > Hardware
- > Insulation
- > Plasterboard
- > Pipes and tubes
- > Steel
- > Timber
- > Windows and doors

RACKING SAFETY

Safety is Everyone's Responsibility

When your workplace relies on a storage solution to run effectively, it pays to be aware of the status of your storage system. DMD Storage Solutions has an experienced team of experts available to you who are fully trained to the latest Australian Standard 4084-2012 in racking and shelving, as well as international best practice.

Protect Yourself

Gain a professional, independent assessment on the safety of your racking systems from our safety and efficiency specialists. You will gain an insight into how your business can thrive by following your safety audit recommendations.

DMD will provide a comprehensive Safety and Audit System manual which you can integrate into your quality procedures. DMD will:

- > Conduct customised safety audits of your racking systems covering damage, overloading & incorrect installation
- > Ensure you comply with Australian Safety Standards
- > Identify ways to use your floor space more effectively
- > Boost your productivity by recommending streamlined processes
- > Identify financial savings for you by recommending optimized racking and rack protection systems
- > Follow this up with regular and comprehensive rack inspections to ensure their on-going safety and effectiveness

Assessments are required before a Safe Working Load sign can be issued



Make use of our Rack Damage colour tagging system which is logical, informative and easy to follow.



Your Duties under the Australian Standards

1. Pallet Racking must be inspected every 12 months as a minimum.
2. Damage should be assessed against pre-defined tolerance limits.
3. If tolerance levels are ever exceeded, corrective measures must be implemented as per our Safety Guide and Audit System.
4. Safe Working Load Signs must be displayed.
5. Shop drawings must be available and updated at all times.
6. Protection needs to be applied to exposed frames.
7. Damage reporting procedures must be established and documented indicating an audit trail of inspection and corrective actions.
8. Gaining approval from your supplier. Your racking structure cannot be altered without the approval from the supplier. Ensure you contact your supplier prior to making any alterations.

Call DMD Storage Solutions to ensure your business meets these legal requirements

VISI PRO

High Visibility Pallet Rack Upright Protector

This new innovative product provides a cost effective solution for protecting pallet rack uprights.

Visipro has become the new standard in rack protection with its unique velcro strap or fast snap clips and impact resistant design.

FEATURES

- > Spreads and absorbs impact from forklifts and pallets
- > Saves downtime due to minimising rack repairs
- > High visibility promotes safer operations
- > Does not protrude into the safe working clearances of the pallets
- > All units are 500 mm high (Can be double stacked for 1,000 mm protection)
- > Tested to FEM 10.2.02 for normal impact to aisle uprights.



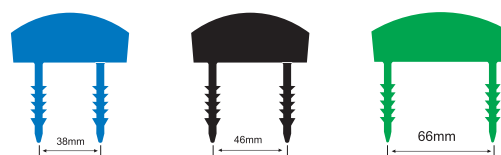
VISI PRO does not protrude into the safe working clearances of the storage bay



The protector is fitted to uprights using Velcro straps or optional fast snap clip.



ITEM CODE	ITEM	UPRIGHT WIDTH	FINISH
PRA310	Visipro Protector AVB	79mm - 92mm	Yellow
PRA315	Visipro Protector AVD	104mm - 117mm	Yellow
PRA320	Visipro Clip 38mm	Suits 80-83mm upright	Blue
PRA325	Visipro Clip 46mm	Suits 90mm upright	Black
PRA330	Visipro Clip 66mm	Suits 113mm upright	Green
PRA335	Visipro Velcro Strap	Any	Black



Clip system allows for fast and simple snap on installation

RACKING PROTECTION

Protect your Staff and your Investment

General forklift impact damage occurs regularly, to accommodate this DMD offers a range of Rack Protection products.

Failure to protect your racking system can result in a major rack collapse, driver injury, injuries to other employees, product spillage and major downtime to your business.

DMD has options to protect your business from these issues:

- > Protect high traffic areas with Row End Barriers
- > Prevent wheels or fork tynes from damaging racking uprights as the forklift moves into the aisle way
- > Should be installed at the end of each row of racking
- > The barriers are available in different designs and widths to suit the racking configuration



Basic Corner Guards

The most economical way to protect against damage to pallet racking.

- > Easy to install to concrete surface
- > Four mounting holes for maximum stability

Wrap-Around Row End Barrier

This barrier offers the maximum protection.

- > Made of impact resistant steel channel with pre-drilled holes for easy installation
- > These end barriers meet and exceed the new Australian Standards
- > Protectors to form a complete end of rack guard

ITEM CODE	ITEM	HEIGHT (mm)	LENGTH (mm)	FINISH
PRA350	Single Row Barrier	400 (ends)	1,150	Safety Orange
PRA340	Double Row Barrier	400 (ends)	2,410	Safety Orange



The new Australian Standard 4084-2012 states rack protection is "Mandatory"

RACKING ACCESSORIES



MonkeyMESH™ is a versatile, adjustable and durable mesh backing system that offers safety and affordability in store rooms, warehouses, archive storage and hardware stores.

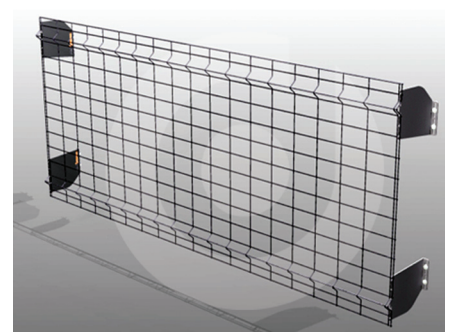
MonkeyMESH™ is ideal for both new facilities and existing racking, where it can be installed to overcome current risks in a cost effective way. Fully tested, this backing system solves safety issues by protecting people and stock.

FEATURES

- > Modular design
- > Suitable for any rack configurations
- > Fully adjustable
- > Durable material for indoor or outdoor use
- > Grip technology
- > Multiple attachment points
- > Reversible brackets



ITEM CODE	ITEM
PRA235	Monkey Mesh 1400L x 1200H
PRA240	Monkey Mesh 2619L x 1200H
PRA245	Monkey Mesh 2771L x 1200H
PRA250	Monkey Mesh 1400L x 1500H
PRA255	Monkey Mesh 2619L x 1500H
PRA260	Monkey Mesh 2771L x 1500H

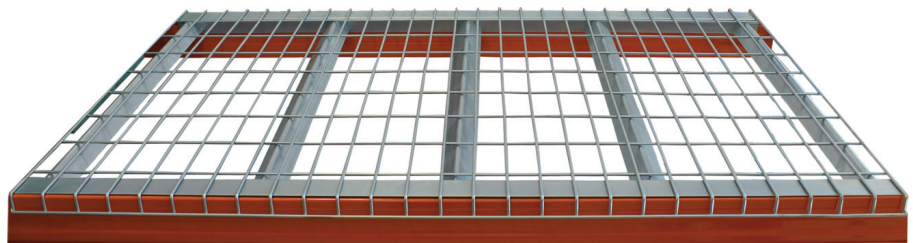


Wire Pallet Decking

Wire decking is now widely used as a safety measure on selective pallet racks to prevent pallets or the products stored on them falling through the racking structure.

FEATURES

- > Meets insurance requirements for fire sprinkler systems
- > Safer solution when using non standard pallets
- > Massive 1500Kg load capacity per deck



ITEM CODE	ITEM
PRA225	Wire Supa Deck 1260 x 840mm
PRA230	Wire Supa Deck 1360 x 840mm

RACKING ACCESSORIES

Hose Hangers



PRA360

- > Hanging storage for items such as hoses, cables & belts.
- > Also serve as a divider to separate different product groups.
- > Adjustable “U” shaped bracket allows easy relocation along the beam.
- > Fits most beam sections
- > 50mm dia. x 700mm long pipe.

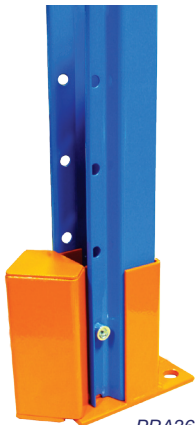
Fork Entry Bars



- > Fork entry bars provide clearance for forklift tyne beneath stored product.
- > Ideal for long lengths of timber, sheet metal or non-standard pallets.
- > Hook on cleat provides a safer alternative than a standard glut.

PRA170 Fork Entry Bar 1219mm
PRA175 Fork Entry Bar 838mm

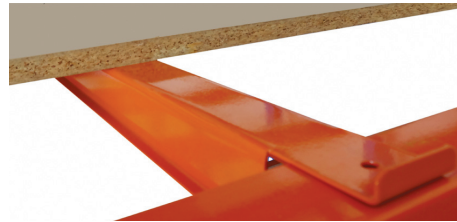
Rear Upright Guards



PRA365

- > Protects the rear uprights from accidental damage caused by impact from the forklift or pallet.
- > Rear upright guards protect the base of the upright by removing the catching edges.
- > Protects the structural integrity of the upright.
- > Minimises damage and easy to replace.

Board Supports

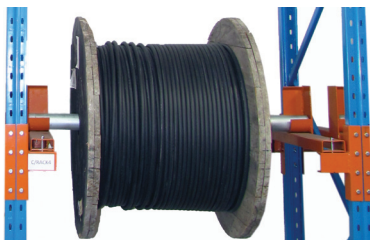


PRA160
FTB Support 838mm
PRA165
FTB Support 1219mm

Increase the strength and lifespan of your particle, MDF or ply board decking.

- > Retains decking eliminating the need for screws or fixings
- > Prevents deflection by strengthening the unsupported decking
- > Durable powder coated finish with no sharp edges
- > Available in 838mm & 1219mm depth

Heavy Duty Drum Cradles



PRA375

Our heavy duty drum cradles provide full accessibility for storing or dispensing large cable reels.

- > Holds up to 1,500Kg per pair
- > Easy to install
- > Evenly distributes load

Cup Brackets



PRA370

Designed to suit most racking systems, these cup brackets simply bolt on to the existing upright frame.

Ideal for dispensing:

- > Electric Cable
- > Ropes & Chains
- > Packaging
- > Rolls of fabric

MEZZANINE PLATFORMS



Double your space

Mezzanine platforms will expand the capacity of your warehouse storage, office or production areas. By maximising your premises' height, instead of its floor area, we can create extra storage or office space, in almost an instant.

Our quick and easy bolted design provides a speedy installation with minimal disruption to your workplace. If your circumstances change, our mezzanines can be extended, modified or relocated with ease.

KEY FEATURES

- > Australian made product
- > Customised to your exact requirements
- > Highest quality steel used
- > Stocked components offer rapid response times
- > Modular Design
- > Completely free standing structure



Up & Over Gate



Staircases, access platforms & industrial handrails

LONGSPAN SHELVING



APPLICATIONS

Ideal for warehouse storage, industrial applications, sea containers, workshops, retail and home garages or sheds

Longspan Shelving is a strong and extremely durable shelving system ideal for a wide variety of applications.

Easy to install and adjust, this system can be configured to accommodate a wide range of storage requirements including spare parts, hardware, retail, bulky items, cartons and archive storage.

FEATURES

- › Heavy duty storage capacities from 250Kg to 700Kg per shelf
- › Shelf levels adjust on 50mm increments and include safety locking pin
- › Free standing with recessed shelves
- › Easy to assemble without tools
- › Steel components are powder coated light grey
- › Optional wheels available



HEAVY DUTY LONGSPAN

Heavy duty beams are made from a 60mm step beam section with an 18mm recess and has a maximum carry capacity of 750Kg. Heavy duty beams are fitted with a particle board insert as standard, or an optional solid steel shelf insert.

- > Particle board is supplied in general dry storage applications.
- > Steel shelf inserts are used in high quarantine or humid applications such as mine sites.
- > Steel shelf inserts provide a more hygienic solution.

HEAVY DUTY SIZES			
FRAME HEIGHTS	FRAME DEPTHS	BEAM LENGTHS	BEAM CAPACITIES
900 mm	450 mm	900 mm	750 Kg
1,800 mm	600 mm	1,200 mm	750 Kg
2,100 mm	900 mm	1,800 mm	450 Kg
2,400 mm	1,200 mm	2,400 mm	450 Kg
3,000 mm	-	-	-

PLEASE NOTE - Allow 65 mm per upright frame when calculating the overall length



Heavy duty shelving with particle board insert



Heavy duty steel shelf insert

MEDIUM DUTY LONGSPAN

Medium duty beams are made from a 55mm folded Z-beam section with a maximum capacity of 300Kg. This beam section is an alternative economical solution.

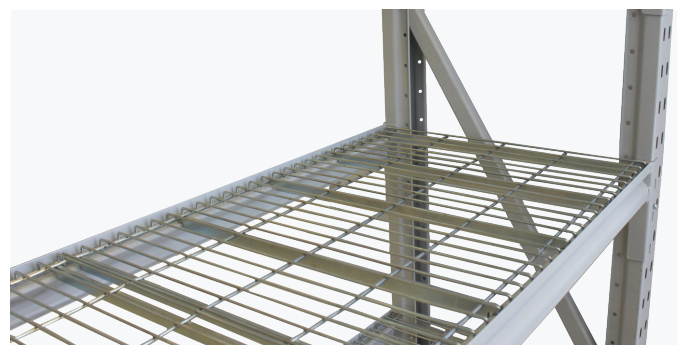
Z-beams are fitted with an MDF insert as standard, or an optional wire decking for ventilation and easy cleaning.

MEDIUM DUTY SIZES			
FRAME HEIGHTS	FRAME DEPTHS	BEAM LENGTHS	BEAM CAPACITIES
900 mm	450 mm	1,200 mm	300 Kg
1,800 mm	600 mm	1,800 mm	250 Kg
2,100 mm	-	-	-
2,400 mm	-	-	-
3,000 mm	-	-	-

PLEASE NOTE - Allow 65 mm per upright frame when calculating the overall length



Medium duty shelving with MDF insert



Medium duty wire decking

ECONO-SPAN SHELVING

Econo-Span Shelving is a cost effective light to medium duty longspan shelving system ideal for a variety of hand picked applications.

The boltless design ensures easy, fast assembly and simple shelf adjustability. All you need to assemble your Econo-Span Shelving is a mallet. Bays are free standing although units can be joined together to create a continuous row.

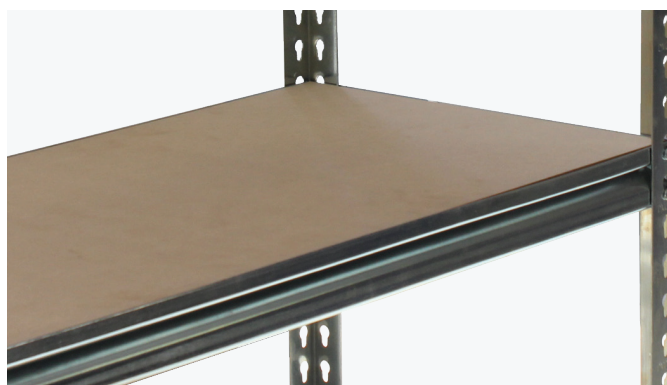
APPLICATIONS

- > General storage applications
- > Ideal to store cartons and boxes
- > Perfect for garages and light industrial use

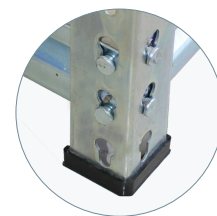
FEATURES

- > Easy to build in minutes - all you need to assemble is a mallet
- > Load capacity up to 200Kg per shelf
- > 55mm Z-beams creates a recess to allow for a 16mm MDF shelf insert. The MDF shelf is retained inside the Z-beam, making the shelf smoother and safer
- > The MDF shelf insert is supported along all four edges, providing greater stability and less deflection
- > Smooth electro-galvanised zinc plated for long life
- > Extra shelf levels available upon request

HEIGHTS (mm)	1,850	2,150
LENGTHS (mm)	1,200	1,800
DEPTHS (mm)	450	600



MDF shelf insert



Plastic feet

ECONO-COOL SHELVING



Econo-Cool Shelving is a strong cool room storage system designed for easy cleaning to meet Australian Health Regulations. This boltless system is simple to install and offers quick and easy adjustments to shelf levels.

All units are fitted with height adjusters to eliminate problems associated with uneven ground. Units are finished in electro-galvanised zinc and fitted with a heavy duty steel wire insert to allow airflow and ventilation.

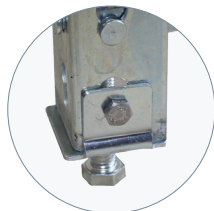
Econo-Cool shelving is ideal for cool room or cold storage applications including commercial kitchens, laundries, restaurants, liquor outlets, bakeries, florist, nurseries, hospitals and a host of other industries that require cool room shelving.

Econo-Cool commercial style looks great in shop retail displays and industrial clothing outlets.

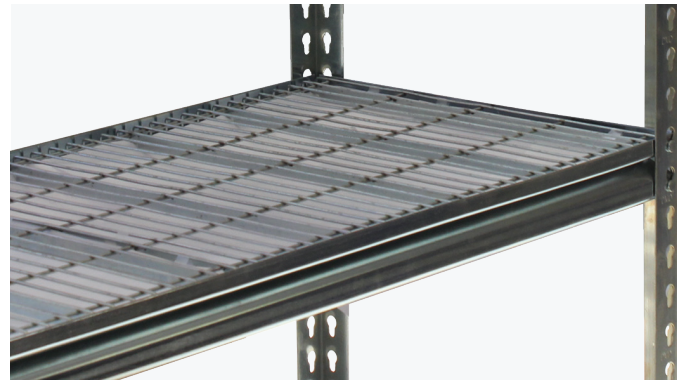
Features

- > Strong & durable - massive 250Kg per level
- > Fast & easy to assemble
- > Corrosion resistant
- > Easy to clean, no creases or crevices
- > Electro-galvanised zinc plated for long life
- > Height adjusters to eliminate problems of uneven floors
- > Can be ordered with optional castors

HEIGHTS (mm)	1,850	2,150
LENGTHS (mm)	1,200	1,800
DEPTHS (mm)	450	600



Adjustable feet



Steel mesh insert

STEEL SHELVING (RUT)



APPLICATIONS

Steel shelving (RUT) is a multi-purpose system suitable for most industries and diverse environments, ranging from industrial warehouses and storerooms through to libraries, museums, retail outlets and offices.

Steel Shelving (RUT) is a multi-purpose system ideal for storing small to medium items in both office and industrial applications.

The solid steel panel construction provides compartmental bays which house items neatly on a shelf and prevents items from falling off the back or sides. Shelf levels are easily adjusted with the use of clips, eliminating the need for nuts and bolts.

RUT Steel Shelving comes in a wide variety of bay sizes with a comprehensive range of accessories, including plastic spare part trays, shelf dividers, file racks and specialised hanging rails.

Applications range from industrial warehouses, automotive parts, stationery, store rooms, offices, hospitals, libraries, schools and museums.

RUT Steel Shelving’s versatile design enables the system to be converted to a Compact Mobile Shelving system if and when required.

FEATURES

- > Modular design allows easy shelf adjustment in 25mm increments with the use of shelf clips, eliminating the need for nuts and bolts
- > Easy to extend, modify, reconfigure or relocate
- > Single or double-sided shelving configurations
- > Durable paint finishes in grey

ACCESSORIES

- > Plastic spare part trays and pick bins
- > Shelf dividers
- > File racks & Lateral filing
- > Reference shelves
- > Decorative Cover panels
- > Shelf labels
- > Specialised hanging rails



STANDARD SIZES			SIZES AVAILABLE ON REQUEST			
BAY HEIGHT (mm)	2,175	2,375	975	1,875	2,175	2,375
BAY LENGTH (mm)	900	1,200	750	900	1,200	-
BAY DEPTH (mm)	300	400	300	400	500	600

GONDOLA SHELVING

Gondola Shelving is primarily used in retail stores for displaying merchandise items.

Gondola Shelving is easy to install in single or double sided applications and you can create feature end units on centre aisles.

Shelving units can be used with or without shelf levels to accommodate for accessories.

Our multi-functional system is used widely in pharmacies, convenience stores, supermarkets, pet stores, hardware stores, auto stores, merchandise showrooms, service stations and newsagencies.

We supply a comprehensive range of versatile accessories to suit almost any product. This allows for frequent, easy to adapt and user friendly changes to any retail environment.

FEATURES

- > Various sizes available can be tailored to your application
- > Metal punch panel backing to suit a range of accessories
- > Base shelf is 450mm deep, upper shelves are 400mm deep (other sizes available upon request)
- > All upper shelves can be adjusted to 20° angle while using the same shelf bracket
- > Shelves are fully adjustable on 50mm increments without the use of specialized tools
- > Strong steel construction finished in white durable powder coat
- > Upright splicing kits available to increase the height at any stage
- > Load capacity of 50Kgs per shelf level



COMPONENT	DIMENSIONS
UPRIGHT POST	30mm x 70mm x 1.5mm thick
UPRIGHT HEIGHTS	1,500mm, 1,800mm and 2,100mm
UPRIGHT SPLICING KIT	300mm high
BASE SHELF	900mm x 450mm
UPPER SHELF	900mm x 400mm
BRACKETS	400mm x 2mm thick

Suitable in a wide range of retail settings



Supermarkets

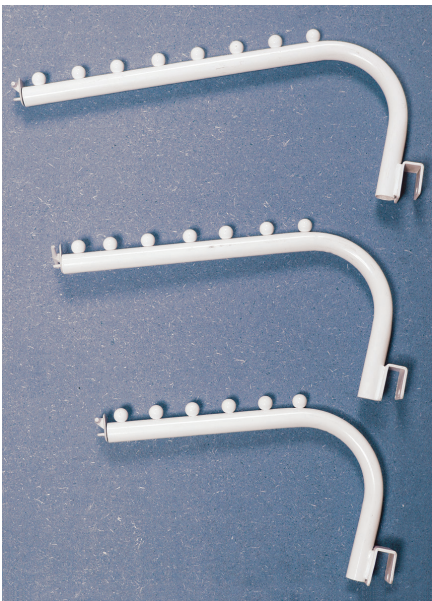


Pharmacies

ACCESSORIES

- > Range of Peg hooks
- > Wire baskets
- > Wire bin fronts and dividers
- > Range of clothes hooks
- > Ticket Strips and Shelf labels
- > Specialised hanging rails designed to your requirements

A wide range of accessories available



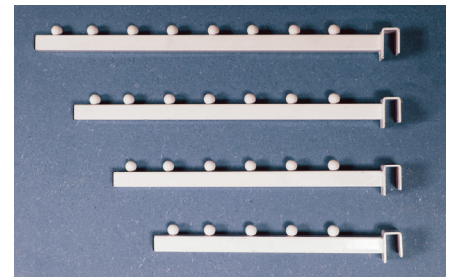
Goose Neck Clothes Hooks



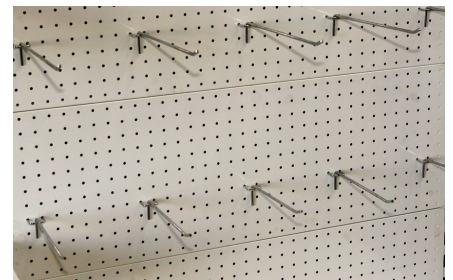
Wire Baskets



Wire Bin Fronts & Dividers



Flat Clothes Hooks



Peg Hooks

PARTS TRAYS



Integral back stop for clear view of contents



Large front face for labelling

Plastic parts trays suit a wide variety of small goods storage. These parts trays create compartmental storage which allows easy identification. They also allow high storage density for small items.

Compared to cardboard, these parts trays are a cost effective solution and have the added benefits of adjustable dividers. They are easy to label with a large flat front for fitting adhesive labels and are resistant to oils and chemicals.

Parts Trays are designed to suit Australian Roll Post shelving and sized for maximum space efficiency.

FEATURES

- > Eight standard sizes to suit 300mm, 400mm and 600mm deep shelving
- > Designed to fit metric RUT (Rolled Upright Type) shelving systems
- > Wide range of compartment sizes by adding extra dividers
- > Back stop allows clear view and easy access of stock
- > Dividers are notched to ensure positive location within the parts tray
- > Trays feature a small handle so that maximum area of the front face can be used for labelling
- > Unique web reinforcing for added strength and durability

ITEM CODE	ITEM	HEIGHT (mm)	WIDTH (mm)	DEPTH (mm)	TRAY VOLUME (Litres)	LOAD CAPACITY (Kg)	DIVIDERS INCLUDED	NO. OF DIVIDER SLOTS	QUANTITY PER CARTON
AT31	Tray	110	100	315	2.6	8	2	5	24
AT40	Tray	60	100	415	1.9	6	3	11	24
AT41	Tray	110	100	415	3.6	10	2	5	24
AT42	Tray	110	150	415	5.7	12	2	5	12
AT43	Tray	135	220	415	10.3	13	2	5	12
AT44	Tray	135	300	415	13.9	15	2	5	12
AT61	Tray	110	100	615	5.3	11	?	7	?
AT62	Tray	110	150	615	8.4	14	3	7	12
ATD0	Divider	60	100	-	-	-	24	-	24
ATD1	Divider	110	100	-	-	-	24	-	24
ATD2	Divider	110	150	-	-	-	24	-	24
ATD3	Divider	135	220	-	-	-	12	-	12
ATD4	Divider	135	300	-	-	-	12	-	12

PICK BINS

Pick bins are generally used to store single Stock Keeping Units (SKU's) only. Ideal for hygienic applications due to the easy clean shape. Pick bins are ideal for warehouses, hospitals and restaurants.

FEATURES

- > Large flat multiple adhesive labels area for identification, barcode or location marking.
- > Handle for easy removal from shelf
- > Easy-clean surfaces. No places for dust to collect, simply wipe clean
- > Curved base allows for easy scoop up of small items
- > Pick bins up to 300mm depth can be mounted on shelves or louvre panels
- > 400mm depth pick bins are designed for standard 900mm x 400mm panel shelving



Handle incorporated into large label holder



Pick Bins up to 300mm depth fit onto shelves or louver panels

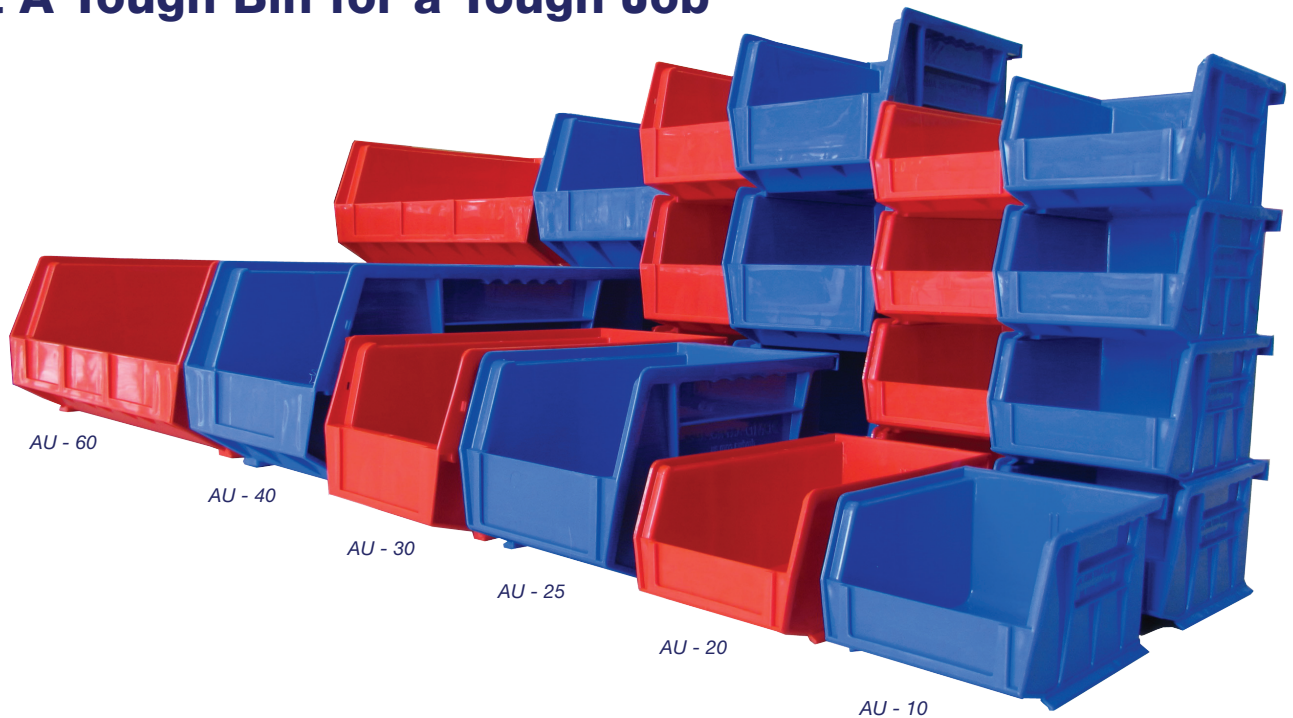


ITEM CODE	HEIGHT (mm)	WIDTH (mm)	DEPTH (mm)	VOLUME (Litres)	SHELVES OR LOUVRE PANELS	MAX. SHELF LOAD (Kg)	MAX. LOUVRE LOAD (Kg)	QUANTITY PER CARTON
AP01	60	107	130	0.8	Shelves & Louvres	4	2	64
AP11	90	107	180	1.0	Shelves & Louvres	8	5	52
AP22	140	143	225	2.8	Shelves & Louvres	12	8	24
AP32	140	143	300	4.2	Shelves & Louvres	13	9	24
AP33	140	217	300	6.5	Shelves & Louvres	15	11	16
AP35*	140	434	300	13.3	Shelves & Louvres	20	15	8
AP42	200	146	400	8.2	Shelves Only	18	-	21
AP43	200	219	400	13.3	Shelves Only	25	-	14

* Dividers (APD3) can be fitted to the AP35 Pick Bin to form two or three compartments.

RHINO BINS

Get A Tough Bin for a Tough Job



Rhino Bins are an ideal storage option for a variety of small parts and goods in -

- > Workshops
- > Storerooms
- > Office Storage
- > Retail

Rhino Bins can be stored on a wall mounted louvre panel, steel shelving or securely stacked on top of one another.

ITEM CODE	OUTER DIMENSIONS	INNER DIMENSIONS
AU - 10	D136 x W106 x H76 mm	D125 x W90 x H65 mm
AU - 20	D187 x W106 x H76 mm	D171 x W90 x H65 mm
AU - 25	D210 x W140 x H125 mm	D190 x W115 x H120 mm
AU - 30	D274 x W140 x H127 mm	D256 x W115 x H115 mm
AU - 40	D375 x W210 x H179 mm	D355 x W170 x H160 mm
AU - 50	D457 x W280 x H255 mm	D432 x W241 x H240 mm
AU - 60	D375 x W415 x H175 mm	D340 x W377 x H160 mm

FEATURES

- > Increase your storage options with strong ribs provided for additional dividers
- > Full length, rear lip supports provided for hanging bins on louvre panels or rails
- > Reinforced ribs adds strength and avoid spreading
- > Extra wide label slot for easy visual identification

- > Stopper prevents stacked bins from shifting forward
- > Made from industrial grade polypropylene co-polymer
- > Highly resistant to chemicals and oils
- > Divider slots in each bin
- > A range of sizes in red and blue

NEW LARGE SIZE NOW AVAILABLE AU - 50



LOUVRE PANELS

Turn an Empty Wall into Instant Storage Space

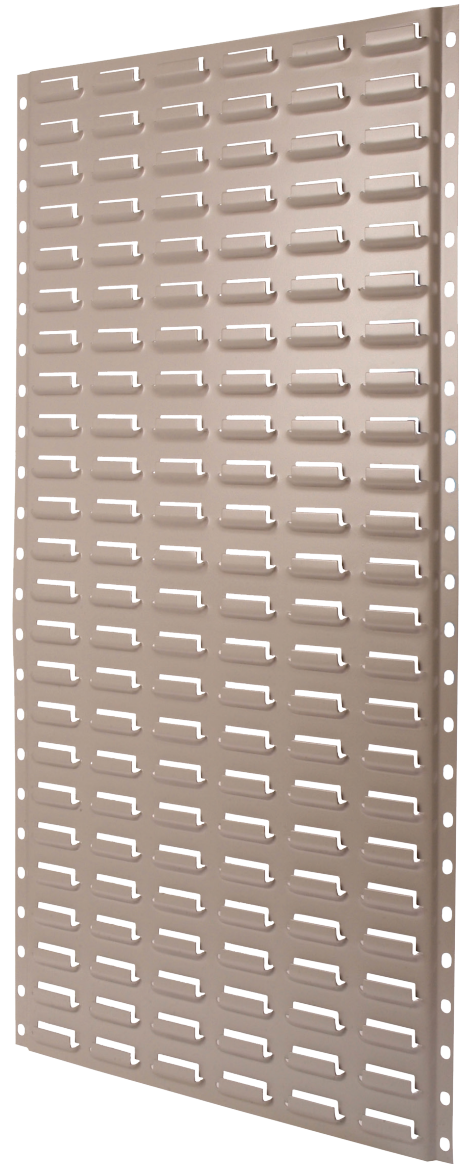
Louvre Panels provide a convenient and economical way to support containers on a wall. They can also be fixed to your workshop bench or at the end of a shelving unit to create even more space.

FEATURES

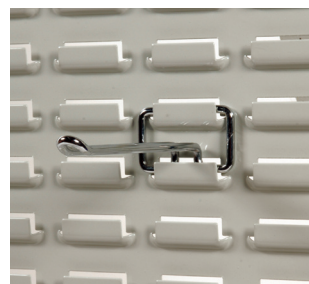
- > Compatible for use with Rhino Bins and hook accessories
- > Made from steel which ensures strength and reliability
- > Three sizes to choose from
- > Mobile trolleys are available for busy workshops
- > Powder coated finish



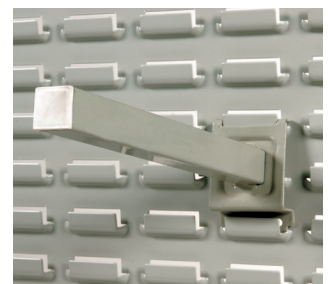
Also available in mobile trolleys



ITEM CODE	ITEM	HEIGHT (mm)	WIDTH (mm)
PLP110	Small Panel	610	455
PLP115	Medium Panel	915	455
PLP120	Large Panel	1,829	455
PLP135	Mobile Trolley	1,610	930



AW - Wire Loop Hook (150mm 5Kgs UDL)



AX - Heavy Duty Hook (250mm 10Kgs UDL)

BETTA COLLAPSIBLE CRATES



Collapsible crates are an innovative addition to the materials handling market. Made from high grade polypropylene, these crates are ergonomically designed making them simple to use and allow for a high return ratio.

With smooth internal and external walls they are hygienic and easy to clean. Collapsible crates are extremely robust and their design makes them easy for one person to open and close.

FEATURES

- > Hidden hinges in the design make them more hygienic
- > One folded unit height is just 345mm, the second unit stacked on top has a folded height of 315mm, resulting in a 3:1 return ratio and lower freight costs
- > Reinforced base and hinge design prolongs their life
- > Parts & accessories are quickly and easily changed, reducing maintenance costs

INNOVATIVE NEW PRODUCTS

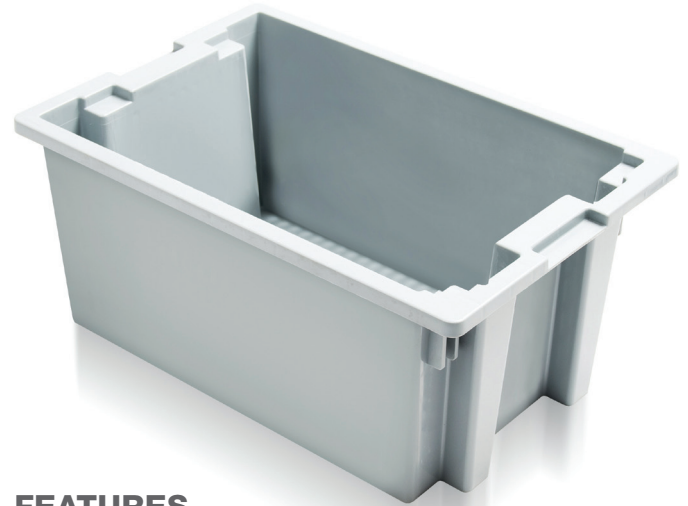
Smooth internal walls makes these crates hygienic and easy to clean.

ITEM CODE	PLB210
EXTERNAL DIMENSIONS (mm)	D1,200 x W1,000 x H975
INTERNAL DIMENSIONS (mm)	D1,130 x W930 x H815
USABLE VOLUME (Litres)	840
FOLDED HEIGHT (mm)	345 or 315
WEIGHT (Kg)	58
DYNAMIC LOAD CAPACITY	1,100Kg / 1 on 1
STATIC LOAD CAPACITY	2,800Kg / 4 on 1
RACKING LOAD CAPACITY	500Kg

BETTA CRATES

180° stack and nest containers have spacious interiors and smooth sides making them suitable for retail distribution systems and other industry logistic distribution.

Vented or solid side walls are available for different good requirements and a flat base makes them ideal for quiet, safe travel on conveyors.



ITEM CODE	PLB110
EXTERNAL DIMENSIONS (Mm)	D600 x W400 x H270
INTERNAL DIMENSIONS (Mm)	D515 x W365 x H260
USABLE VOLUME (LITRES)	43
WEIGHT (Kg)	2.2
LOAD CAPACITY	30Kg

FEATURES

- > Ideal for fruits and vegetables
- > Stack & nest through 180° rotation
- > Save 70% freight and storage costs when empty and nested

BETTA SECURITY CRATES

Security crates are widely used in retail distribution and the manufacturing industries.

These lidded crates feature an easy to attach security seal that ensures secure distribution for all kind of goods, guaranteeing that the crate cannot be opened without detection. They are designed for both manual and automatic handling.



FEATURES

- > Intergral plastic theft proof hinges
- > Tamper evident security device on lids
- > Card or document pocket on each side
- > Raised blocks ensure a positive stacking location
- > Save 70% freight and storage costs when empty and nested

ITEM CODE	PLB220	PLB310	PLB315
EXTERNAL DIMENSIONS (mm)	D600 x W400 x H250	D600 x W400 x H320	D600 x W400 x H365
INTERNAL DIMENSIONS (mm)	D539 x W364 x H232	D539 x W364 x H302	D539 x W364 x H347
USABLE VOLUME (Litres)	40	60	68
WEIGHT (Kg)	2.8	3.0	3.4
LOAD CAPACITY	30Kg	35Kg	35Kg

STACK & NEST CRATES

Keep Your Storage Fresh

Stack and Nest Crates are a multipurpose heavy duty storage crate. They are ideal for a wide selection of industries including

- > Food Trades
- > Smallgoods Manufacturing
- > Materials Handling
- > Engineering
- > Automotive
- > Warehouse and Distribution

These containers stack and nest which provides substantial freight and logistic savings when not in use. They are made in Australia for Australian conditions, made from tough, durable and UV resistant food grade polypropylene.

For increased manoeuvrability and easy access, stack and nest crates can be used with optional skates and trolleys.

IDEAL APPLICATIONS

- > Meat trades
- > Poultry and fish
- > Warehousing and distribution
- > Small goods manufacture
- > Materials handling
- > Engineering
- > Automotive

FEATURES

- > Store just about anything neatly and conveniently in these stackable crates
- > Made in Australia from foodgrade polypropylene
- > Optional lids available
- > Available in grey or blue
- > UV stabilised
- > Multi-purpose
- > Stackable



Crate Trolley

ITEM CODE	ITEM	HEIGHT (mm)	WIDTH (mm)	DEPTH (mm)	CRATE VOLUME (Litres)	WEIGHT (Gm)	STACKABLE (YES/NO)
AP04	Crate	127	323	430	13.5	620	N
AP4D	Crate	210	323	430	22	765	N
AP07	Crate	210	413	645	32	1,600	Y
AP10	Crate	276	413	645	52	1,800	Y
AP15	Crate	397	413	645	68	2,400	Y
AP4DL	Lid	20	332	440	-	425	N
AP15L	Lid	32	425	656	-	755	Y
4NCT	Trolley	915	430	1,000	-	15,000	N

ENVIRO CRATES

Save Money while you Save the Environment



Enviro Crates are the only choice for the environmentally responsible business. They are strong, made from 100% recycled materials, stackable and made from high grade polypropylene.

Enviro Crates are a multipurpose heavy duty storage crate. Ideal for a wide variety of industries including -

- > Materials handling
- > Engineering
- > Automotive
- > Warehousing and Distribution
- > Mining

These containers have the ability to stack and nest which provide substantial freight and logistics savings when not in use.

Enviro Crates are made in Australia from tough, durable UV resistant 100% recycled polypropylene.

ITEM CODE	ITEM	HEIGHT (mm)	WIDTH (mm)	DEPTH (mm)	CRATE VOLUME (Litres)	WEIGHT (Gm)	STACKABLE (YES/NO)
AP07R	Crate	210	413	645	32	1,600	Y
AP10R	Crate	276	413	645	52	1,800	Y
AP15R	Crate	397	413	645	68	2,400	Y
AP15R	Lid	32	425	656	-	755	Y
AP10/15ES	Skate	190	405	615	-	6,050	Y

For increased manoeuvrability and easy access, stack and nest crates can be used with optional skates and trolleys

Enviro-Skate

Made from foam filled recycled polypropylene the Enviro-Skate has a load rating of 600Kgs and is designed for AP10 & AP15 crates. Enviro-Skates allow manoeuvrability and easy access when handling products.

FEATURES

- > Heavy duty castors with zinc plated steel fasteners & nyloc nuts
- > Two brakes standard
- > Round edges for minimal "bump" damage
- > Stackable for easy storage when not in use



Enviro-Skate

STANDARD LOCKERS



2 Tier

3 Tier

4 Tier

2 Step

1 Tier



Beige

Grey



Cam lock with two keys



Latchlock for own padlock

Standard lockers offer individualised, secure and well-ventilated storage for personal belongings in offices, warehouses and sports clubs.

Available in five standard configurations including one, two, three and four-tier options as well as a 2 tier step door to accommodate large jackets. Secure locking options include Cam locks with 2 keys or latch-lock for padlocks along with ready to go accessories such as shelves, hanging rails and coat hooks. Plenty of capacity in a compact shape allows you to make the most of the space you have available.

FEATURES

- > Secure & well ventilated storage for personal belongings
- > Multiple options storage
- > Five standard configurations - 1,2,3 & 4 Tier plus 2 Step option
- > Master and keyed alike option available
- > Modular all steel construction
- > Two step takes jackets
- > Two tier fitted with coat hook & hanging rail
- > Replacement keys available
- > Powder coat finish

ACCESSORIES

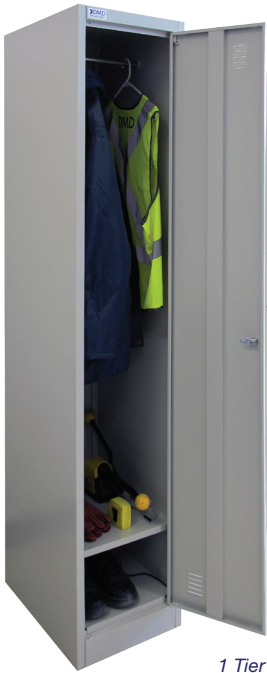
- > Sloping tops
- > Mop stands
- > Extra shelves
- > Bench seating

ITEM CODE	ITEM	HEIGHT (mm)	WIDTH (mm)	DEPTH (mm)	INTERNAL DIMENSIONS
CLA110	1 Tier	1,800	300	450	1 compartment 1631H x 246W
CLA130	1 Tier	1,800	375	450	1 compartment 1631H x 321W
CLA145	2 Tier	1,800	300	450	2 compartments 800H x 246W
CLA165	2 Tier	1,800	375	450	2 compartments 800H x 321W
CLA180	3 Tier	1,800	300	450	3 compartments 525H x 246W
CLA200	4 Tier	1,800	300	450	4 compartments 394H x 246W
CLA220	4 Tier	1,800	375	450	4 compartments 394H x 321W
CLA235	2 Step	1,800	375	450	-

WARRANTY

5 Year warranty covers materials & workmanship. Does not cover misuse or abuse.

HEAVY DUTY LOCKERS



1 Tier



2 Tier



3 Tier



4 Tier

Designed originally for the mining and resources industry, these lockers are made to last with their heavy duty construction.

The extra width and depth accommodates bulky items such as overalls and safety helmets. Available fully assembled or flat packed to reduce freight cost and eliminate potential damage in transport.

FEATURES

- > Reinforced doors for added strength
- > Solid 0.8 mm gauge steel
- > Padlock ready latch lock
- > Cross-flow ventilation to minimise odours
- > Powder coat finish
- > Available flat packed or assembled
- > Powder coated in Grey Ripple

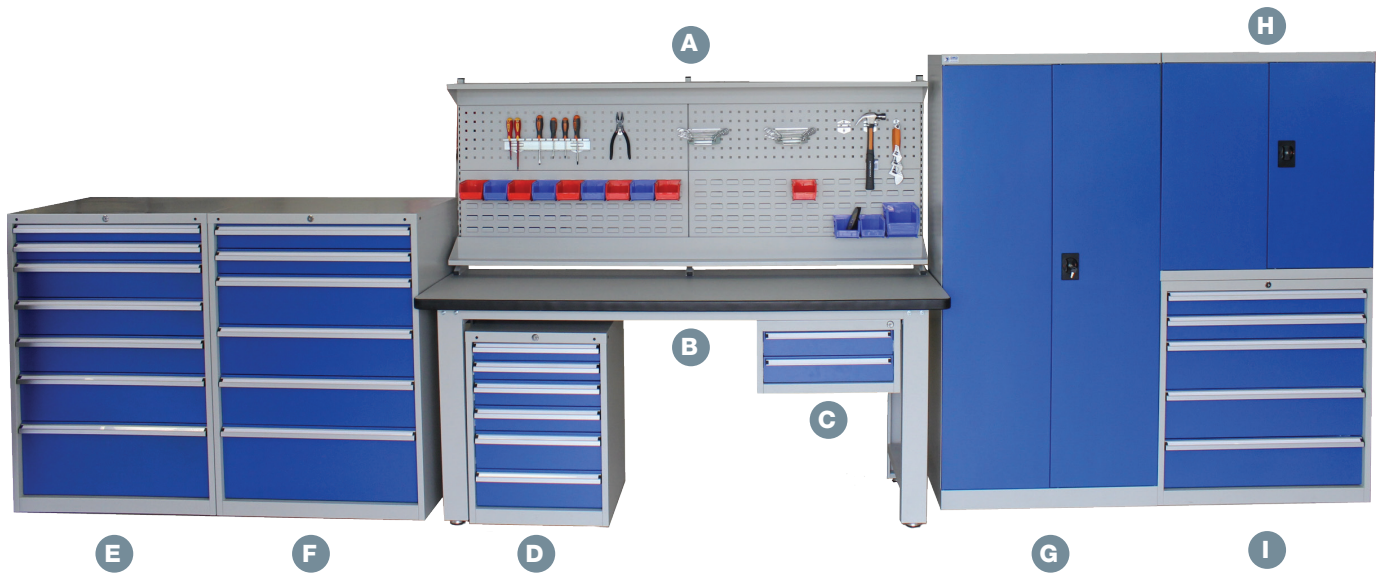


ITEM CODE	ITEM	HEIGHT (mm)	WIDTH (mm)	DEPTH (mm)	FEATURES
CLK110	1 Tier	1,850	385	540	1 hanging rod & 1 shoe shelf 250 mm from base
CLK115	2 Tier	1,850	385	540	1 hanging rod in each compartment
CLK120	3 Tier	1,850	385	540	3 individual compartments
CLK125	4 Tier	1,850	385	540	4 individual compartments

ACCESSORIES

- > Sloping tops
- > Mop stands
- > Bench seating

ULTIMATE INDUSTRIAL WORKSTATION



These ultra-strong professional metal cabinets and workbenches provide a practical, versatile and durable workplace.

Constructed from heavy duty components, these units combine quality with class to ensure a lifetime of productive use. Suitable for any application, they are sure to handle the toughest situation and look great as well.

ITEM	ITEM CODE	PRODUCT DESCRIPTION
A	CUL200	Ultimate Backboard for Work Bench*
B	CUL195	Ultimate Work Bench 2100 x 750mm*
C	CUL205	Ultimate Tool Cabinet 2 Drawer
D	CUL210	Ultimate Tool Cabinet 6 Drawer Pedestal
E	CUL160	Ultimate 7 Drawer Tool Cabinet
F	CUL155	Ultimate 6 Drawer Tool Cabinet
G	CUL110	Ultimate Full Height Cupboard*
H	CUL115	Ultimate Half Height Cupboard*
I	CUL145	Ultimate 5 Drawer Cupboard

* Requires assembly

WORKBENCH BACKBOARD

Our perforated backboard, tools and equipment all make for an easy, streamlined work place.

Unit consists of -

- 3 x Slotted Uprights
- 2 x Full Length Shelves
- 2 x Louvre Panels W900 x H400mm
- 2 x Square Punched Panels W900 x H400mm



CUL200

ULTIMATE INDUSTRIAL BENCHES

Ultimate Industrial Workbenches provide a reliable, flexible workspace for a range of uses.

Our heavy duty steel frame combined with a 53mm thick laminated bench top delivers a bench that will withstand the heaviest loads and impacts.

Combining our optional perforated backboard with a range of tool hooks, storage bins and shelves allows your tools to be stored and located easily.

Complete the range with our 2 or 6 drawer cabinets designed to fit neatly underneath the bench allowing extra storage space for small parts, tools, packaging equipment, hardware and stationery. The drawers include a range of plastic storage trays or adjustable steel dividers which will allow you to design the space to suit your application.

When combined with other products in the Ultimate range, it will form part of a complete Industrial Workstation Solution.



CUL195

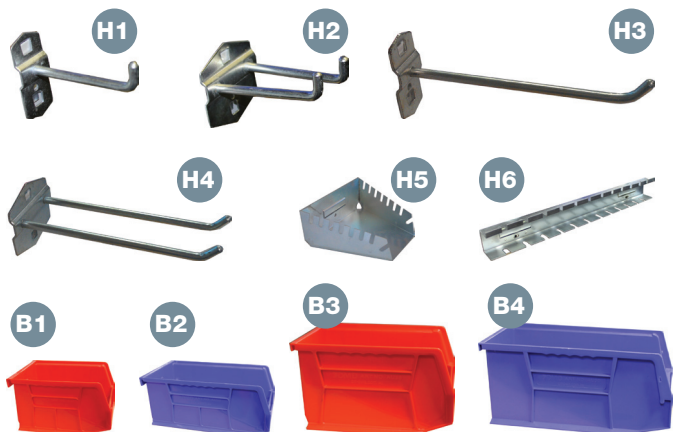
Features

- > Powder coated heavy duty steel fabricated frame allows loads up to 1000 Kg
- > 53 mm wooden bench tops for extra rigidity
- > Easy adjustable feet assists in levelling the most uneven surfaces
- > Oil resistant laminated surface
- > Multi-functional designs for full workstation optimisation



CUL205

BACKBOARD ACCESSORIES



ITEM	ITEM CODE	PRODUCT DESCRIPTION
H1	CUL175	Ultimate Single Hook 75mm
H2	CUL165	Ultimate Double Hook 75mm
H3	CUL180	Ultimate Single Hook 150mm
H4	CUL170	Ultimate Double Hook 150mm
H5	CUL190	Ultimate Spanner Holder
H6	CUL185	Ultimate Screwdriver Holder
B1	AU-10	Rhino Bin (Blue/Red) D136xW106xH76mm
B2	AU-20	Rhino Bin (Blue/Red) D187xW106xH76mm
B3	AU-25	Rhino Bin (Blue/Red) D210xW140xH125mm
B4	AU-30	Rhino Bin (Blue/Red) D274xW140xH127mm

ULTIMATE DRAWER CABINETS

Heavy duty tooling cabinets, ideal for industrial applications and serious workshops.

The sliding drawers are high quality for long lasting smooth operation. Each drawer has a mechanical safety lock which allows one drawer to be opened at a time, preventing the cabinet tipping over.

All sliding drawers utilise solid steel draw runners with high quality mechanical bearings for long lasting smooth operation.

FEATURES

- > 100Kg Drawer Capacity
- > Secure Key Locking with Anti Tilt
- > Full Depth Drawer Opening System
- > All Drawers include Dividers



100, 150, 200 & 300mm high drawers feature adjustable metal dividers



75mm high drawers feature plastic part trays

WARRANTY

2 Year warranty covers materials & workmanship. Does not cover misuse or abuse.

Ultimate Tool Cabinet 6 Drawer Pedestal

Dimensions H750 x W565 x D580mm

- 2 x Drawers 75mm high
- 2 x Drawers 100mm high
- 2 x Drawers 150mm high
- Weight (Gross) 90Kg



CUL210

Ultimate 6 Drawer Tool Cabinet

Dimensions H1200 x W881 x D653mm

- 2 x Drawers 100mm high
- 3 x Drawers 200mm high
- 1 x Drawer 350mm high
- Weight (Gross) 131.8Kg



CUL155

Ultimate 7 Drawer Tool Cabinet

Dimensions H1200 x W881 x D653mm

- 2 x Drawers 75mm high
- 3 x Drawers 150mm high
- 1 x Drawer 200mm high
- 1 x Drawer 300mm high
- Weight (Gross) 137.8Kg



CUL160

ULTIMATE CUPBOARDS

The Ultimate Cupboard is made of reinforced sheet metal with hinged doors and is fitted with a heavy duty key locking system.

This heavy duty cupboard will store just about anything and is ideal for workshops and industrial applications which require a high level of security.

FEATURES

- > Massive 150 Kg Shelf Capacity
- > Secure Key Locking
- > Optional Drawers & Adjustable Base

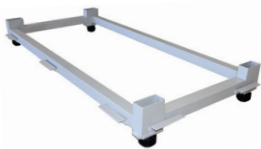
Ultimate Full Height Cupboard

Dimensions H1800 x W900 x D450mm
4 x Standard Adjustable Shelves
Weight (Gross) 95.5Kg



CUPBOARD ACCESSORIES

5UCB
Adjustable Base



5UCD1
100mm Drawer with Dividers



5UCD2
200mm Drawer with Dividers



Ultimate Half Height Cupboard

Dimensions H900 x W900 x D450mm
2 x Standard Adjustable Shelves
Weight (Gross) 58Kg



Ultimate 5 Drawer Cupboard

Dimensions H900 x W900 x D450mm
1 x Drawer 75mm high
2 x Drawers 100mm high
1 x Drawer 150mm high
1 x Drawer 200mm high
Weight (Gross) 103.3Kg

- > Adjustable Metal Dividers
- > 75Kg Load Capacity
- > Full Length Locking Handle



WARRANTY

2 Year warranty covers materials & workmanship. Does not cover misuse or abuse.

STORAGE CABINETS



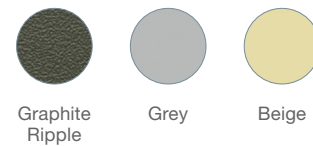
Storage Cabinets can store anything from folders, ring binders, boxes or stationery.

FEATURES

- > Options for both filing & storage
- > Flush mounted 3 point locking
- > Height adjustable shelving
- > Master and keyed alike option available
- > Government tender approved
- > Reinforced doors
- > Clip in accessories
- > Door close dampeners
- > Modular all steel construction
- > Replacement keys available
- > Powder coat finish

ACCESSORIES

- > Wire filing racks
- > Extra shelves



Graphite
Ripple

Grey

Beige

ITEM CODE	ITEM	HEIGHT (mm)	WIDTH (mm)	DEPTH (mm)	NO. OF SHELVES
CST145	Extra Height	1,950	915	457	4
CST125	Full Height	1,830	915	457	3
CST110	Half Height	1,016	915	457	2

WARRANTY

3 Year warranty covers materials & workmanship. Does not cover misuse or abuse.

COMPACT MOBILE FILING SYSTEMS



Hand operated

Release costly floor space and make file access quicker and easier with these compact mobile filing systems.

FEATURES

- > Saves costly floor space
- > Makes file access quicker and easier
- > Strong, secure and designed for high density storage
- > Modular platform base integrates to any office
- > Can be fitted with wide range of filing & storage accessories
- > Anti-tilt mechanism
- > Lockable
- > All steel construction
- > Powder coat finish

ACCESSORIES

- > Roll-out filing frame
- > Lateral filing
- > Hook filing
- > Computer binder storage
- > Shelf file rack dividers
- > Divider plates
- > Roll-out shelves
- > Sliding wire dividers
- > CD storage drawer
- > Roll-out drawers

Mechanically assisted



Grey



Beige

WARRANTY

3 Year warranty covers materials & workmanship. Does not cover misuse or abuse.

SAFETY STORAGE CABINETS



Safety Storage Cabinets provide a safe, secure and efficient method of storing all types of flammable liquids, sprays, and other related substances.

Worksafe & Australian Standards Compliance

To comply with WorkSafe requirements, while maintaining good housekeeping practices, the storage of these flammable liquids should be stored in Safety Storage Cabinets.

Our Safety Storage Cabinets are built to Australian Standards (AS 1940) and are suitable for all Class 3 Liquids.

Innovative Design

This innovative automatic sequential door closing system ensures no doors are accidentally left open, which prevents flammable goods being exposed to fire. This design allows both doors to move 180 degrees and this wide opening allows the shelves to conveniently slide in and out.

FEATURES

- > Made from alloy (no sparking risk)
- > Dual door sequential closing mechanisms
- > Two 50mm diameter venting bungs
- > Levelling bolts
- > 150mm water tight base sump to hold spillage
- > Anti-static wire and three-point door latch



SC250

Choose from four different types of Flammable Liquids Storage Cabinets



SC30

30-Litre Cabinet

Fits under standard bench, can also sit on bench, and is ideal for compliant storage of small amounts of flammable liquids.



SC100

100-Litre Cabinet

Fits under standard bench, can also sit on bench, and is ideal for compliant storage of small amounts of flammable liquids.



SC160

160-Litre Cabinet

Popular for 20-litre cans as well as smaller aerosol cans.



SC250

250-Litre Cabinet

Popular for 20-litre cans as well as smaller aerosol cans.

ITEM CODE	SC30	SC100	SC160	SC250
DESCRIPTION	1 door cabinet 1 shelf	2 door cabinet 1 shelf	2 door cabinet 2 shelves	2 door cabinet 3 shelves
CAPACITY	30 litres, holds 12 x 2.5 litre bottles	100 litres holds 24 x 2.5 litre bottles	160 litres holds 6 x 20 litre cans	250 litres holds 9 x 20 litre cans
WEIGHT (Kg)	53	100	138	187
EXTERNAL DIMENSIONS (mm)	800H x 505W x 500D	800H x 1,100W x 500D	1,295H x 1,100W x 500D	1,825H x 1,100W x 500D

OUR PERSONAL APPROACH

Why Our Approach is Unique

We take the time to understand your existing situation and future requirements to ensure we meet your storage and handling needs. We analyse the effects that inefficient storage is having on your business and we take into consideration key areas of concern such as:

- > Space Constraints
- > Safety Concerns
- > Inventory Control Systems
- > Handling Methods
- > Workflow Processes
- > Improving Productivity

By doing this we get to understand your special requirements and can work with you to create an efficient and safe working environment.

Project Start to Completion

Upon receiving your official approval we:

- > Propose an installation plan and timing to minimise disruption to your business.
- > Undertake pre-installation checks.
- > Throughout the installation process, safety is our first priority. Every DMD project is completed using method statements.
- > After the successful installation we brief your staff on the correct operation procedure.
- > Racking installations include a rack safety manual and audit plan.
- > For your ongoing requirements we have a dedicated consultant available to continue our personal on-going service.

Throughout your project you will be dealing directly with DMD. We do not use contract labour.



CELEBRATING
ANNIVERSARY **25TH**

»DMD
STORAGE GROUP

Our Vision

OUR CLIENTS

To continue being a valued partner to our loyal clients by improving the efficient movement of their goods and work flow.

OUR PEOPLE

Growing and empowering our people who are committed to providing a personalised solution.



»DMD
STORAGE SOLUTIONS

HEAD OFFICE & SHOWROOM
6 RENEWABLE CHASE BIBRA LAKE WA 6163
AUSTRALIA 1300 504 050 IDD +61 8 9410 9400
FAX +61 8 9434 6565
sales@dmd.com.au www.dmd.com.au